

MyHealthMath's **PERSON-CENTERED** Decision-Support System

Real People, Real Interactions, Real Savings



MyHealthMath combines the power of big data and sophisticated mathematical modeling with personalized live engagement to give employers and employees unparalleled health care benefits decision support. We help employees choose their best health plan and employers provide the best plan options—and at the end of the day, everyone walks away saving money.

THE BENEFITS FOR YOU

Increased savings and satisfaction for your employees:

- > Employees are 4X more likely to choose an optimal health plan
- > \$1300 savings per employee

MyHealthMath[®]

Explore how our solutions lead to better health benefit decisions that reduce total costs.

207.221.0201

info@myhealthmath.com

www.myhealthmath.com

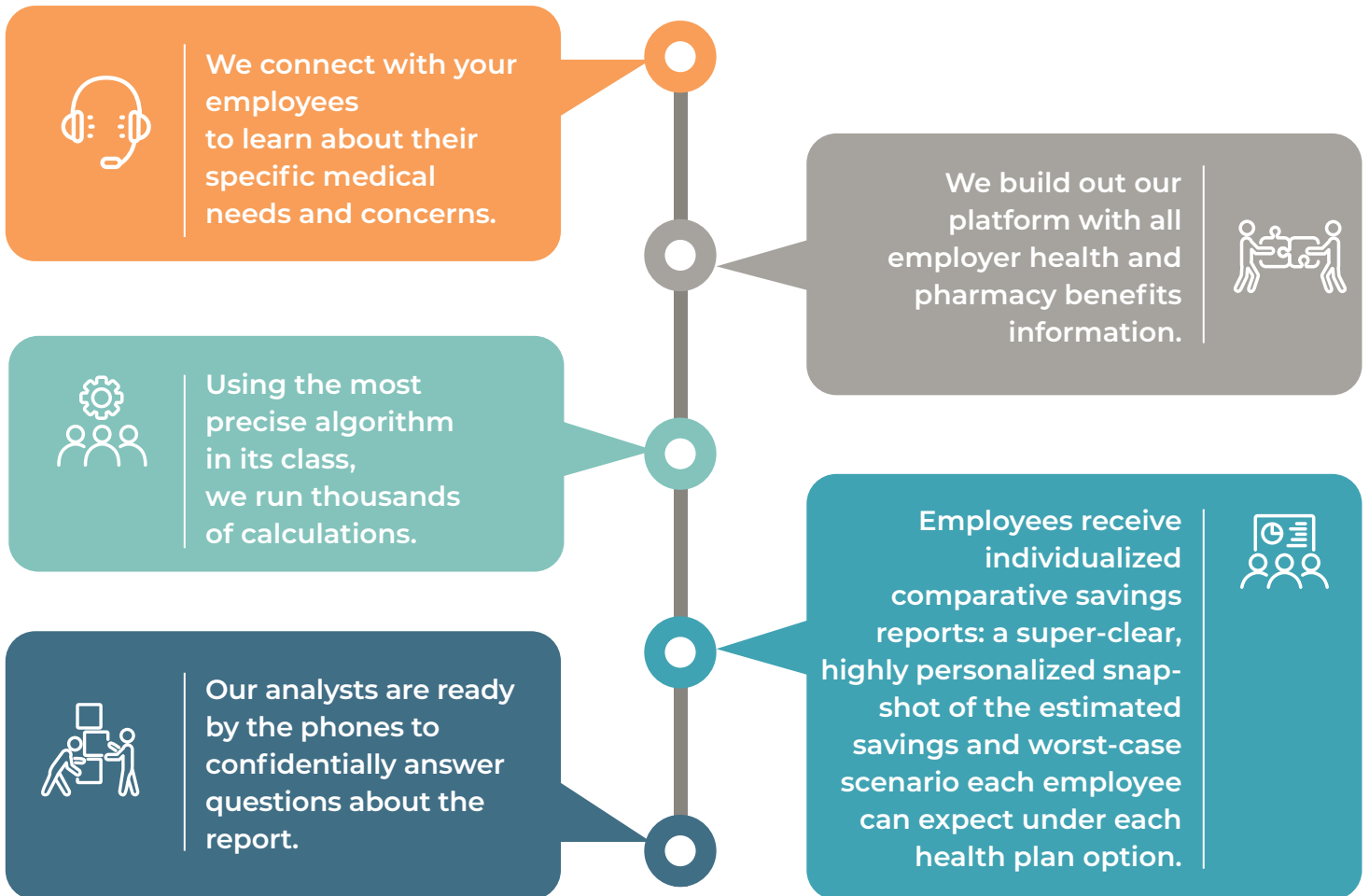


Health Insurance Hero

Your Employees Need Person-to-Person Support

Choosing the most cost-efficient health plan is complicated. That's why—unlike other decision-support offerings—MyHealthMath's solution is centered on your people and their individual health needs. Our uniquely personalized approach is simple: **by connecting your people with our people, we provide incomparable insight into their individual health plan choices.**

HOW IT WORKS



TWO WAYS TO ENGAGE WITH ANALYSTS:



PHONE INTERVIEW: Analysts conduct one-to-one telephone conversations to gather in-depth data on expected medical usage.



ONLINE PLUS: For convenience, employees can also answer questions on-line through their phone or computer and can later connect with an analyst if they have any questions.

OUR SOLUTIONS

HOW HEALTH INSURANCE HERO BENEFITS:

Employees



Personalized, human-to-human support:

We aren't a bot or a cartoon; we're real people—and that's exactly the support your employees need in this health care environment.



The most accurate decision tool in the market:

Only MyHealthMath's platform collects high-resolution individual employee data and all components of employer health benefits program—that makes for incredibly accurate reports.



Proactive outreach:

We prompt employees to choose a convenient time and then we contact them directly to conduct interviews.



Ongoing support:

We're here to answer employees' questions long after the report is in their hands.



Unmatched savings:

Employees who work with MyHealthMath save an average of \$1,300 per year.

Employers



Simple implementation:

We, not you, build out our platform to include your health benefits program information: premiums, employer and employee contributions, HSA/HRA contributions, prescriptions and formulary.



Expand HR capacity:

We partner with Human Resources to create a custom communications strategy to engage employees and consult on plan choices for the upcoming year.



Proof of impact:

Our Post-Open Enrollment Retrospective measures impact—exposing migration trends and dollars saved—and helps support strategies to improve plan offerings in the next year.



Cost-efficient pricing:

Pricing starts at under one-tenth of one percent of average annual health spend—that's less than a rounding error.



Virtual Benefits Fair

Clarity around health planning decisions matters more now than ever before.

MyHealthMath's custom virtual benefits fair makes it easy to share health benefits with an increasingly online workforce. We partner with your HR team to deliver a personalized Health Benefits Fair experience.

With Custom Virtual Benefits Fairs, employees can:



Watch a live or recorded webinar that reviews available plan options and highlights any changes



Receive personalized attention during a highly stressful time



Visit an interactive website featuring tools and resources for learning about health plan options



Sign up to connect with a MyHealthMath analyst for help choosing the optimal plan



How Virtual Benefits Fairs Benefit Employers

This easy, interactive online environment gives your employees extra support when they need it most. No more wasted time and no more confusion equals happier employees and a more efficient HR department.